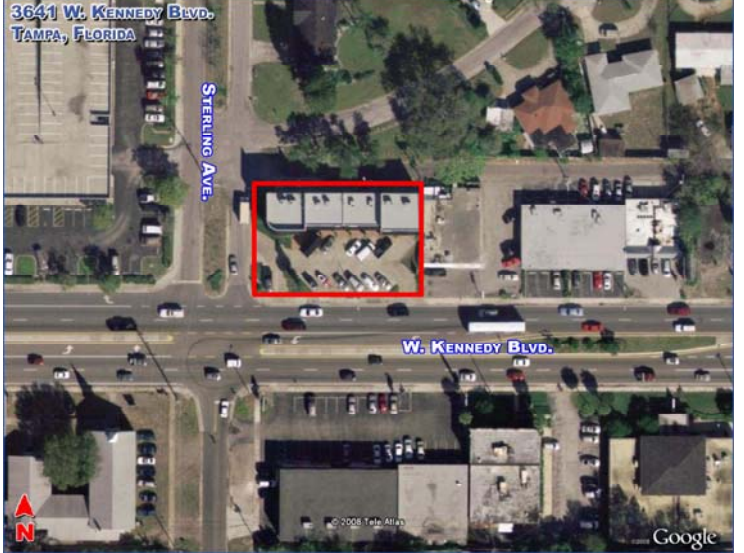
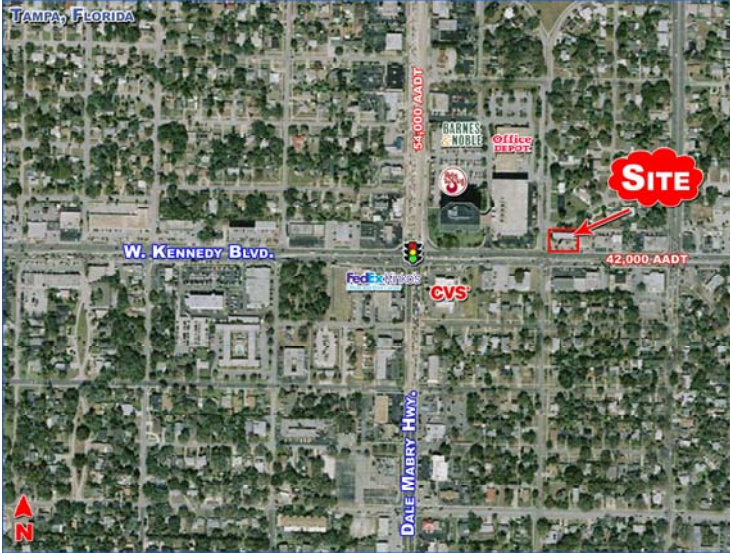


Exhibit "A"

Sterling Plaza
 3641 West Kennedy Boulevard
 Suites A – G
 Tampa, FL 33609



(Floor Plan)

Legal Description

Lots 8, 9, 10, 11 and 12, Block 9 of PALMERE SUBDIVISION, as the map thereof, recorded in Plat Book 12, Page 51, Public Records of Hillsborough County, Florida.

